

Get prepared for the HKDSE Examination Results Release – the Latest Information on Multiple Pathways

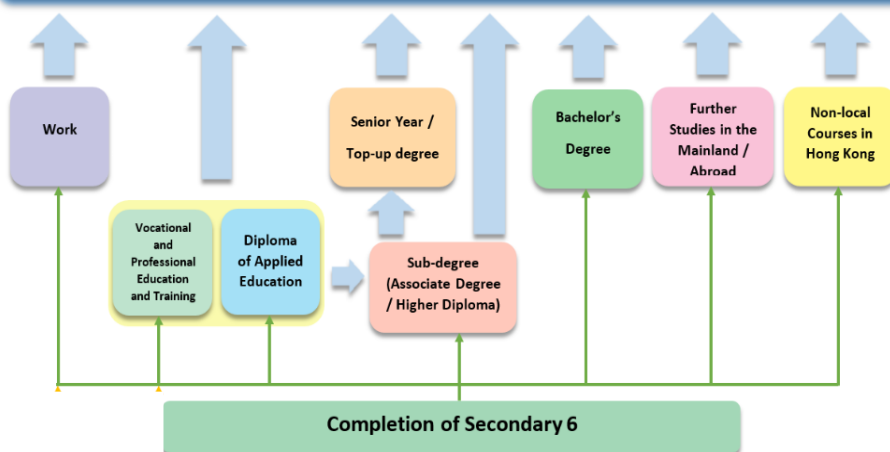


Council and Secondary Section 2
Curriculum Development Institute
Education Bureau
2025

'All roads lead to Rome'
Diversified pathways with multiple entry
and exit points to further studies and
career paths

Multiple Pathways

Continuing Education & Lifelong Learning



Abilities?
Interests?
Needs?
Aspirations?



Further
Studies

Further Studies & Career Development

(Minimum requirements on HKDSE Exam Results)

Career



「332A+22/33」

Publicly-funded Undergraduate programmes

Core Subjects

- ▶ Chinese Language : Level 3
- ▶ English Language : Level 3
- ▶ Mathematics : Level 2
- ▶ Citizenship and Social Development: **Attained**, AND
- ▶ Level 2 or 3 in two other elective subjects [Note 1]

「22+222」

Sub-degree programmes

- ▶ Chinese Language : Level 2
- ▶ English Language : Level 2, AND
- ▶ Level 2 in three other subjects [Note 2]

Entry Requirements for Civil Service Grades

- ▶ Level 2 in five subjects or equivalent qualifications [Note 2]

Note 1: All institutions recognise Mathematics Extended Part (M1/M2) as elective subjects. Some institutions recognise ApL courses as elective subjects.

Note 2: Including 'Attained' in Citizenship and Social Development, 'Level 2' in Mathematics Extended Part (M1/M2), 'Attained' in ApL subjects (up to 2 ApL subjects), and the specific examination grades/language proficiency levels attained in the Other Languages examinations (i.e. A2 or above in French/German/ Spanish, N3 or above in Japanese, or TOPIK II Grade 3 or above in Korean).

3

2024 Secondary 6 Students' Pathway Survey

Bachelor's degree programmes (48.6%)
Post-secondary programmes (33.6%)
Other full-time programmes (17.6%)
S6 course (0.2%)

Further study
(Full-time
programmes)
(94.5%)

Full-time employment (2.2%)

Part-time employment /
study (2.1%)

Others (1.1%)



Source: 2024 Secondary 6 Students' Pathway Survey (https://www.edb.gov.hk/en/about-edb/publications-stat/figures/index_2.html)
(Figures cover only 41 385 S6 graduates who responded to the survey)

4



Support Measures on HKDSE Exam Results Release

5

☀️ Designated Webpage for S6 Students ☀️



The latest information on multiple pathways for S6 students

DESIGNATED WEBPAGE FOR SECONDARY STUDENTS 6



What's New

27 May 2025

"Information on HKDSE Exam Results Release 2025" has been launched on the "Designated Webpage for S6 Students"

6 May 2025

Online Forum - Seminar on "Get Prepared for the HKDSE Examination Results Release - The Latest Information on Multiple Pathways" 2025 will be held on 10 Jun

9 April 2025

Reminders for 2025 HKDSE Exam and Exam Results Release - Tips on Using e-Navigator

9 April 2025

Reminders for 2025 HKDSE Exam and Exam Results Release - Multiple Pathways for Various Choices - Non-local Studies

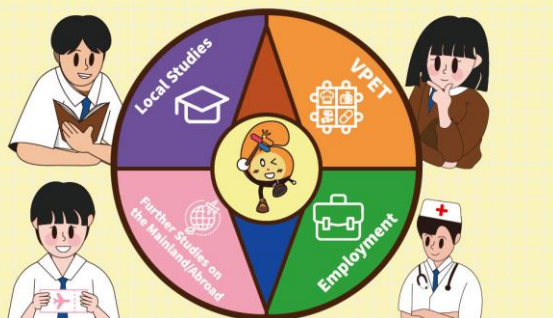
6

Designated Webpage
for S6 Students



Important information on HKDSE Exam results release, including further studies, multiple pathways, support measures & financial assistance schemes

INFORMATION ON HKDSE EXAM RESULTS RELEASE 2025



Information on HKDSE
Exam Results Release 2025

Information on HKDSE Exam Results Release 2025

7

Designated Webpage
for S6 Students



Important information on HKDSE Exam results release, including further studies, multiple pathways, support measures & financial assistance schemes

Useful Information

- Useful Information on HKEAA and JUPAS Office
- Counselling and Support Services
- Useful Links
- Online Parents' Seminar on "Get prepared for the Release of HKDSE Examination Results – the Latest Information on Multiple Pathways" 2025

School Nominations Direct Admission Scheme

- Introduction of Scheme
- Designated programmes in the 2025/26 academic year
- Frequently Asked Questions

Repeating S6

- FAQs about repeating S6
 - List of schools admitting HKDSE S6 repeaters from other schools (2024/25 school year)
- (Remark: The latest information for 2025/26 academic year will be uploaded to this webpage soon)

e-Navigator

Provision of programme information across different levels (e.g. degrees, higher diplomas and associate degrees) for S6 students and parents

- How to Use

Financial Assistance Schemes

- Tertiary Student Finance Scheme – Publicly-funded Programmes (TSFS)
- Non-means-tested Loan Scheme for Full-time Tertiary Students (NLSFT)
- Financial Assistance Scheme for Post-secondary Students (FASP)
- Non-means-tested Loan Scheme for Post-secondary Students (NLSPS)
- Extended Non-means-tested Loan Scheme (ENLS)
- Student Travel Subsidy (STS) for Tertiary or Post-secondary Students

Other References

- FAQs on the Recognition of the Hong Kong Diploma of Secondary Education (HKDSE) and Multiple Pathways for Students
- 2025 Application Information and Admission Arrangement for Full-time Locally-accredited Sub-degree and Undergraduate Programmes NOT Covered under JUPAS
 - For current HKDSE/JUPAS candidates seeking Year 1 entry (updated as at 04.12.2024)

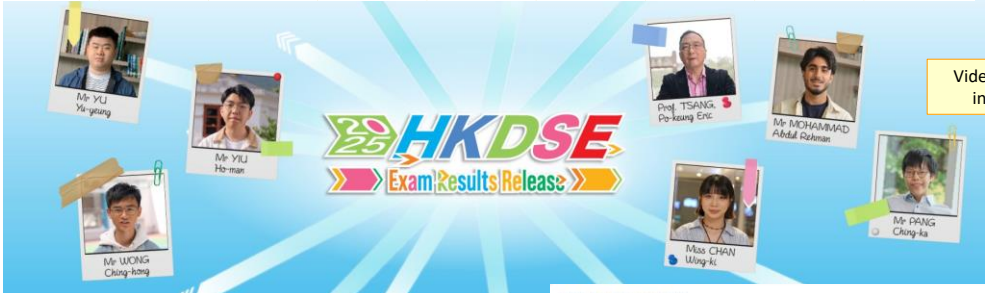
8

Designated Webpage for S6 Students



Cheer up for S6 students
Instant messaging stickers & cheer up videos

JUPAS	Other Degree / Sub-degree Programmes	Vocational and Professional Education and Training	Diploma of Applied Education Programme	Further Studies on the Mainland / Abroad	Non-local Courses in HK	Employment	Reference	Cheer Up Zone
-------	--------------------------------------	--	--	--	-------------------------	------------	-----------	---------------



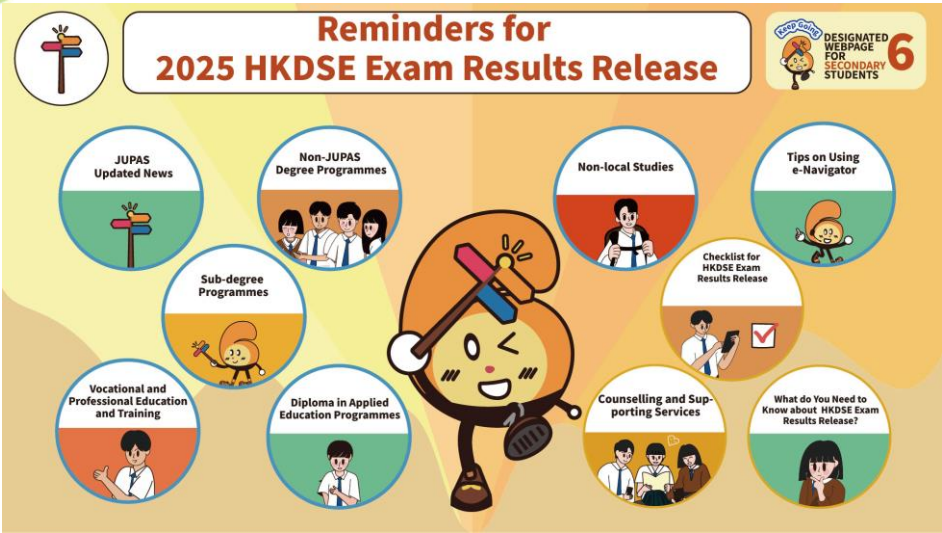
Videos to be uploaded in early July 2025



Designated Webpage for S6 Students



Reminders for HKDSE Exam results release

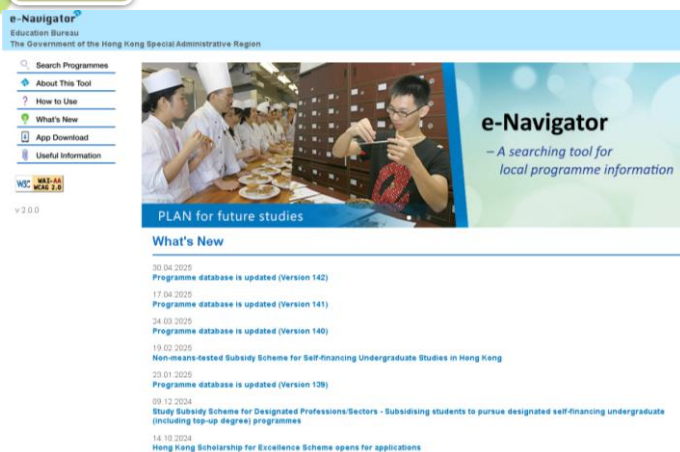


"e-Navigator"

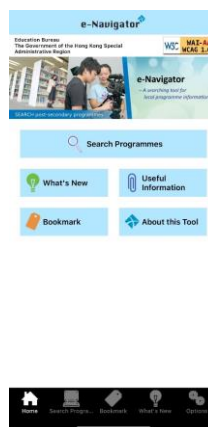


Search for information on programmes at various levels in local institutions

Website



Mobile App



iOS version



Android version



HarmonyOS version

11

Features of "e-Navigator"

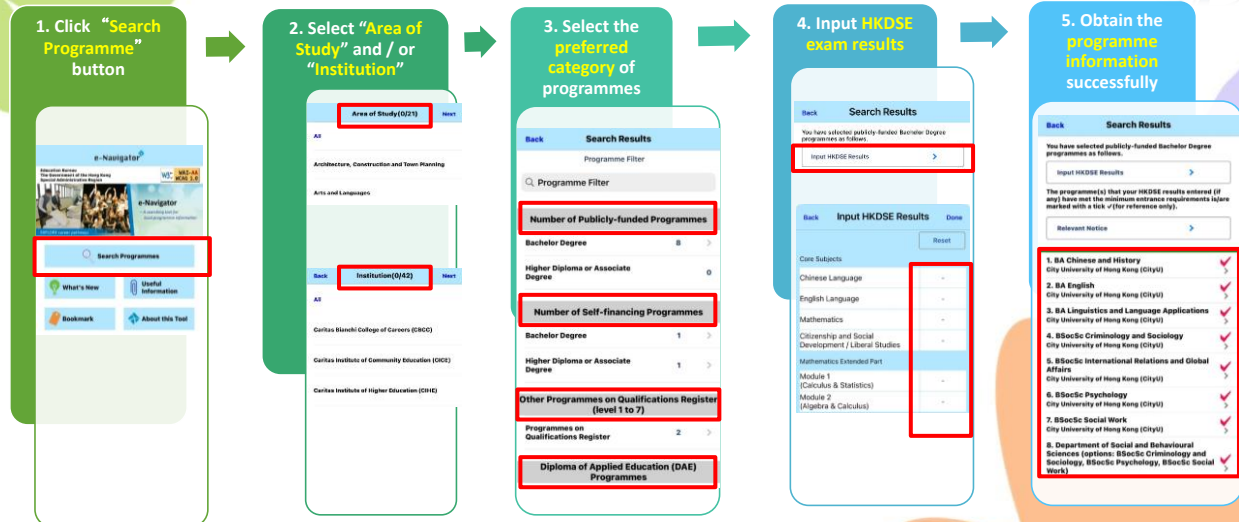
1. Provide information on **over 6700 local programmes**, including programmes from JUPAS, Information Portal for Accredited Post-secondary Programmes (iPASS), Diploma of Applied Education and Qualifications Register for timely search
2. Provide **JUPAS admission scores of last year** on different programmes for reference
3. Provide **hyperlinks to the official website of various institutions/programmes**
4. **Update programme information regularly**
5. Input the predicted or actual HKDSE Exam results to search for corresponding local programme information
6. Allow **saving** of search record for future reference



12

"e-Navigator"

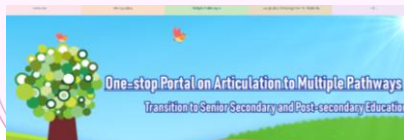
How to search programmes ?



13

Useful Links

One-stop Portal on Articulation to Multiple Pathways
Transition to Senior Secondary and Post-secondary Education



<https://www.edb.gov.hk/amp/en>

Smart Parent Net



<https://www.parent.edu.hk/en/smart-parent-net>

Life Planning Information



<https://lifeplanning.edb.gov.hk/en>

14

STAND
BY
YOU



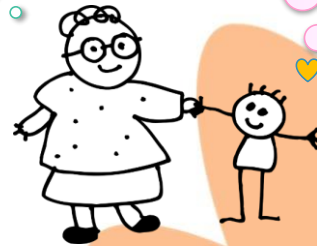
Parents' Support to Children

Get the latest
information from
related parents'
talks/ seminars

Explore various plans
for further studies
with reasonable
expectations

Consult the school on
pathways for further
studies (with application
details) in accordance
with children's abilities
and interests

Communicate,
support and
encourage



15



Thank you